

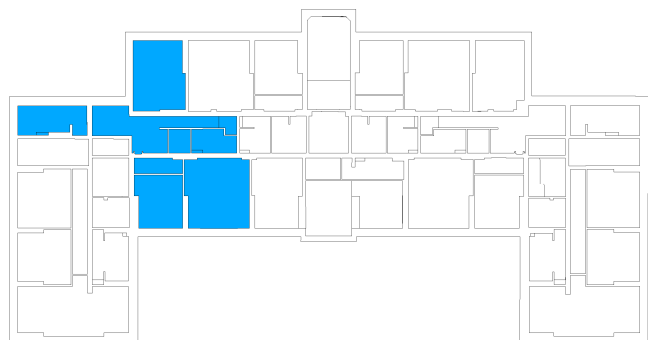
# Verwaltungsgebäude | Unit 15

Straße nach Fichtenwalde 3, 14547 Beelitz-Heilstätten



## 3 rooms | second floor m<sup>2</sup>

Corridor	24.72
WC	2.88
Bathroom 1	10.7
Bathroom 2	10.74
Eat-in kitchen	28.32
Storeroom	5.04
Room 1	19.63
Room 2	14.63
Room 3	20.59
Room 4	8.78
<b>Net living area</b>	<b>146.03</b>



**Total living area 146.03**

The image and plan material serves the tentative illustration of the project. Deviations in a later planning stage are explicitly reserved. Small variations concerning the areas are possible within a floor plan type. All dimensions are approximate. Due to technical requirements, partial areas can possibly be separated, and ceilings can be suspended.

The terraces and balconies are counted towards 50%.