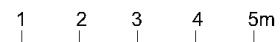
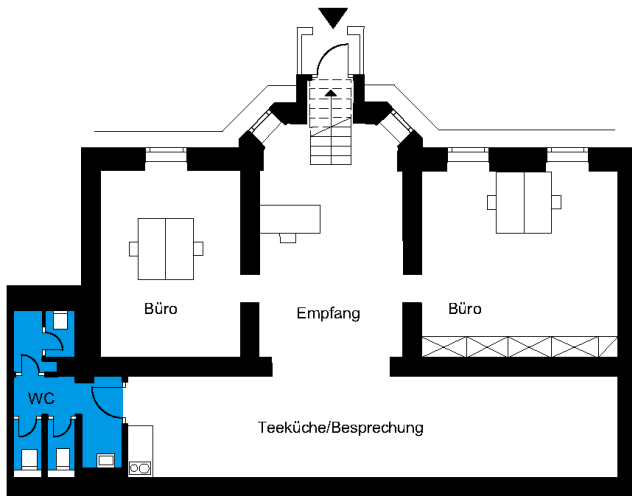


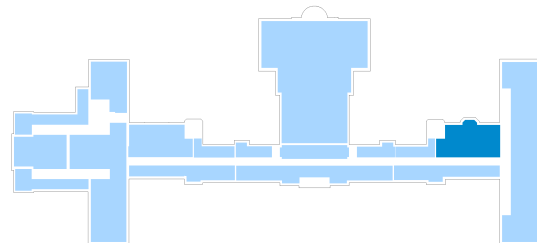
# Waldresidenz | Commercial unit 12

Living in a historical monument  
 Dr. Herrmann-Straße 4c, 14547 Beelitz-Heilstätten



3 rooms | basement m<sup>2</sup>

Total living area **142.32**



The image and plan material serves the tentative illustration of the project. Deviations in a later planning stage are explicitly reserved. Small variations concerning the areas are possible within a floor plan type. All dimensions are approximate. Due to technical requirements, partial areas can possibly be separated, and ceilings can be suspended.

The terraces and balconies are counted towards 50%.