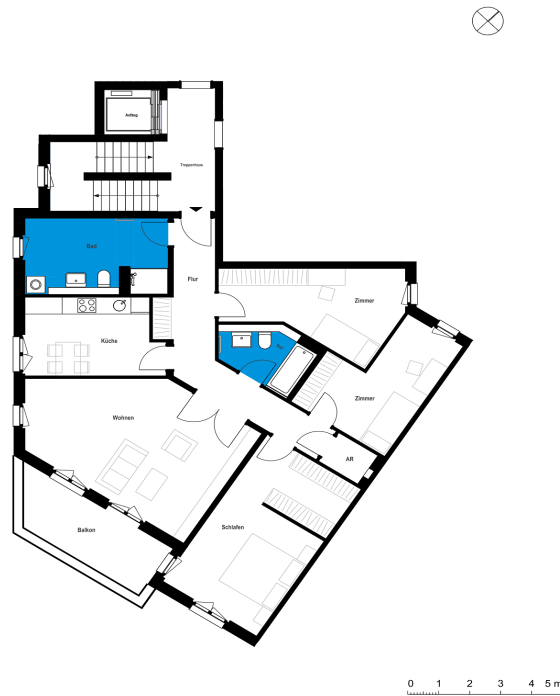


# Bergfelde II | House C | Unit 87

Bahnstraße 11, 16562 Hohen Neuendorf



## 3 rooms | second floor m<sup>2</sup>

Corridor	14.31
Bathroom 1	12.21
Bathroom 2	5.53
Kitchen	11.91
Storeroom	1.84
Living room	29.38
Room 1	14.59
Room 2	13.08
Room 3	22.17

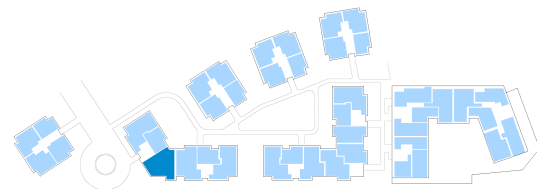
---

Net living area 125.02

Balcony (50%) 5.19

---

**Total living area 130.21**



The image and plan material serves the tentative illustration of the project. Deviations in a later planning stage are explicitly reserved. Small variations concerning the areas are possible within a floor plan type. All dimensions are approximate. Due to technical requirements, partial areas can possibly be separated, and ceilings can be suspended.

The terraces and balconies are counted towards 50%.