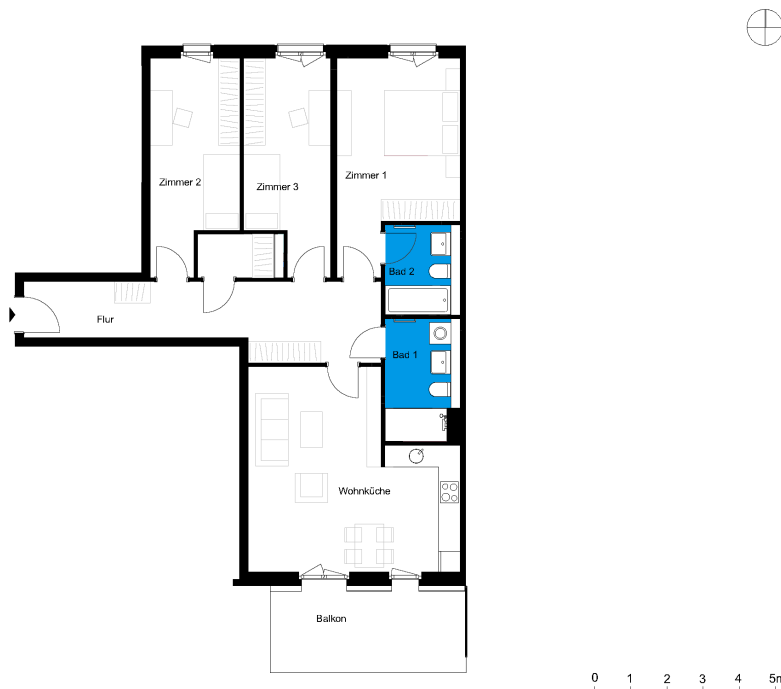
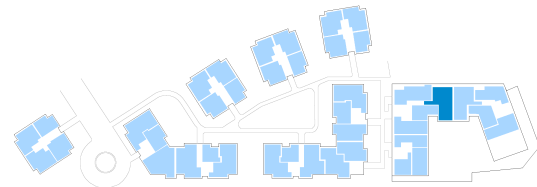


Bergfelde II | House A | Unit 16

Mittelstraße 4b, 16562 Hohen Neuendorf



3 rooms first floor	m ²
Corridor	17.88
Bathroom 1	6.72
Bathroom 2	5.19
Eat-in kitchen	29.22
Storeroom	2.54
Room 1	17.23
Room 2	13.34
Room 3	12.98
Net living area	105.1
Balcony (50%)	6.49
Total living area	111.59



The image and plan material serves the tentative illustration of the project. Deviations in a later planning stage are explicitly reserved. Small variations concerning the areas are possible within a floor plan type. All dimensions are approximate. Due to technical requirements, partial areas can possibly be separated, and ceilings can be suspended.

The terraces and balconies are counted towards 50%.