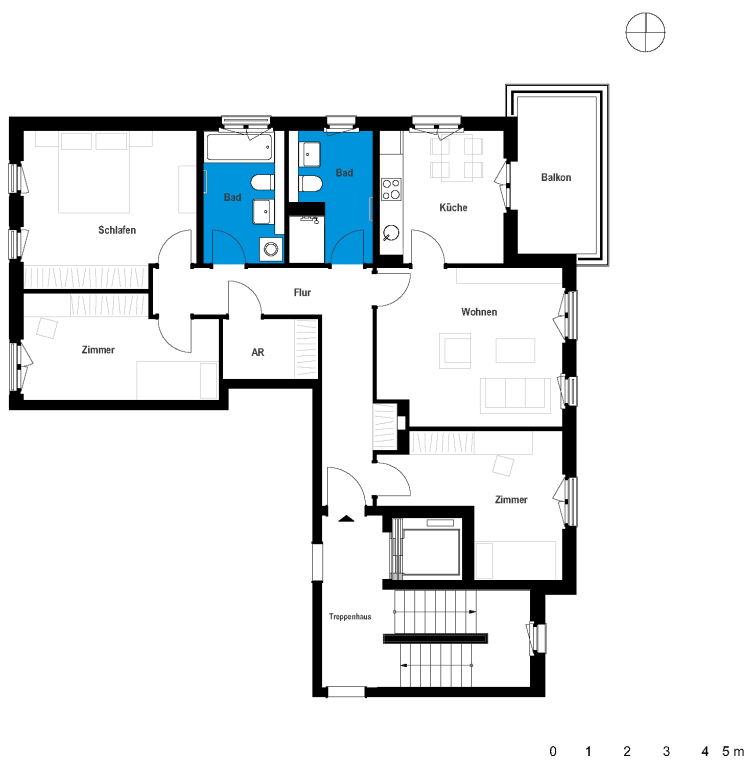


Bergfelde II | House B | Unit 43

Mittelstraße 4d, 16562 Hohen Neuendorf



3 rooms | second floor m²

Corridor	13.19
Bathroom 1	6.94
Bathroom 2	7.07
Kitchen	10.79
Storeroom	3.76
Living room	19.6
Room 1	17.36
Room 2	13.12
Room 3	12.64

Net living area 104.47

Balcony (50%) 4.01

Total living area 108.48



The image and plan material serves the tentative illustration of the project. Deviations in a later planning stage are explicitly reserved. Small variations concerning the areas are possible within a floor plan type. All dimensions are approximate. Due to technical requirements, partial areas can possibly be separated, and ceilings can be suspended.

The terraces and balconies are counted towards 50%.