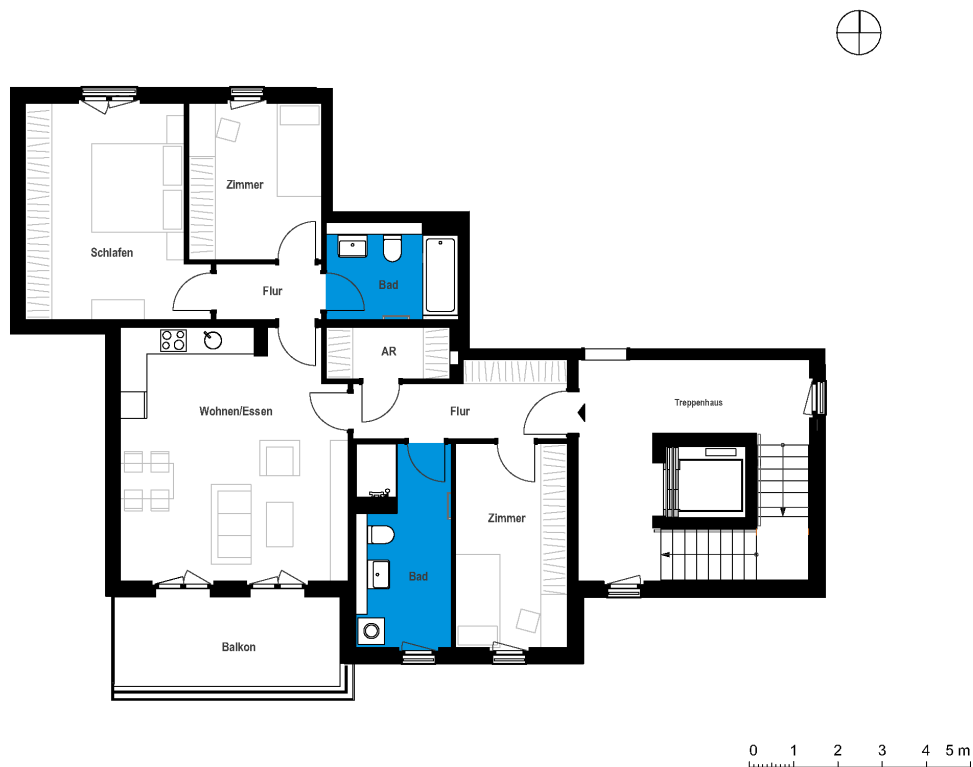


Bergfelde II | House B | Unit 49

Mittelstraße 4e, 16562 Hohen Neuendorf



3 rooms first floor	m ²
Corridor	10.36
Bathroom 1	9.61
Bathroom 2	6.36
Eat-in kitchen	29.24
Storeroom	3.35
Room 1	11.66
Room 2	18.33
Room 3	10.61
Net living area	99.52
Balcony (50%)	5.19
Total living area	104.71



The image and plan material serves the tentative illustration of the project. Deviations in a later planning stage are explicitly reserved. Small variations concerning the areas are possible within a floor plan type. All dimensions are approximate. Due to technical requirements, partial areas can possibly be separated, and ceilings can be suspended.

The terraces and balconies are counted towards 50%.