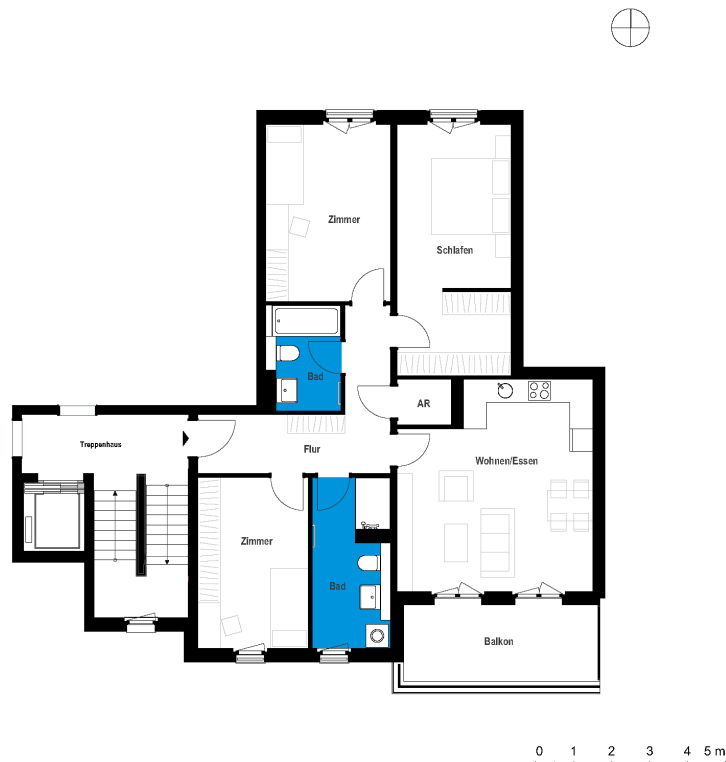
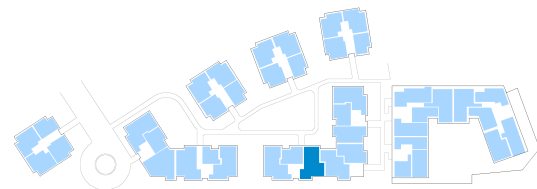


Bergfelde II | House B | Unit 60

Bahnstraße 13, 16562 Hohen Neuendorf



3 rooms first floor	m ²
Corridor	11.33
Bathroom 1	5.24
Bathroom 2	8.97
Eat-in kitchen	27.03
Storeroom	1.71
Room 1	15.33
Room 2	19.65
Room 3	13.12
Net living area	102.38
Balcony (50%)	5.19
Total living area	107.57



The image and plan material serves the tentative illustration of the project. Deviations in a later planning stage are explicitly reserved. Small variations concerning the areas are possible within a floor plan type. All dimensions are approximate. Due to technical requirements, partial areas can possibly be separated, and ceilings can be suspended.

The terraces and balconies are counted towards 50%.